

Mandela Station at West Oakland BART

Tree Removal Plan

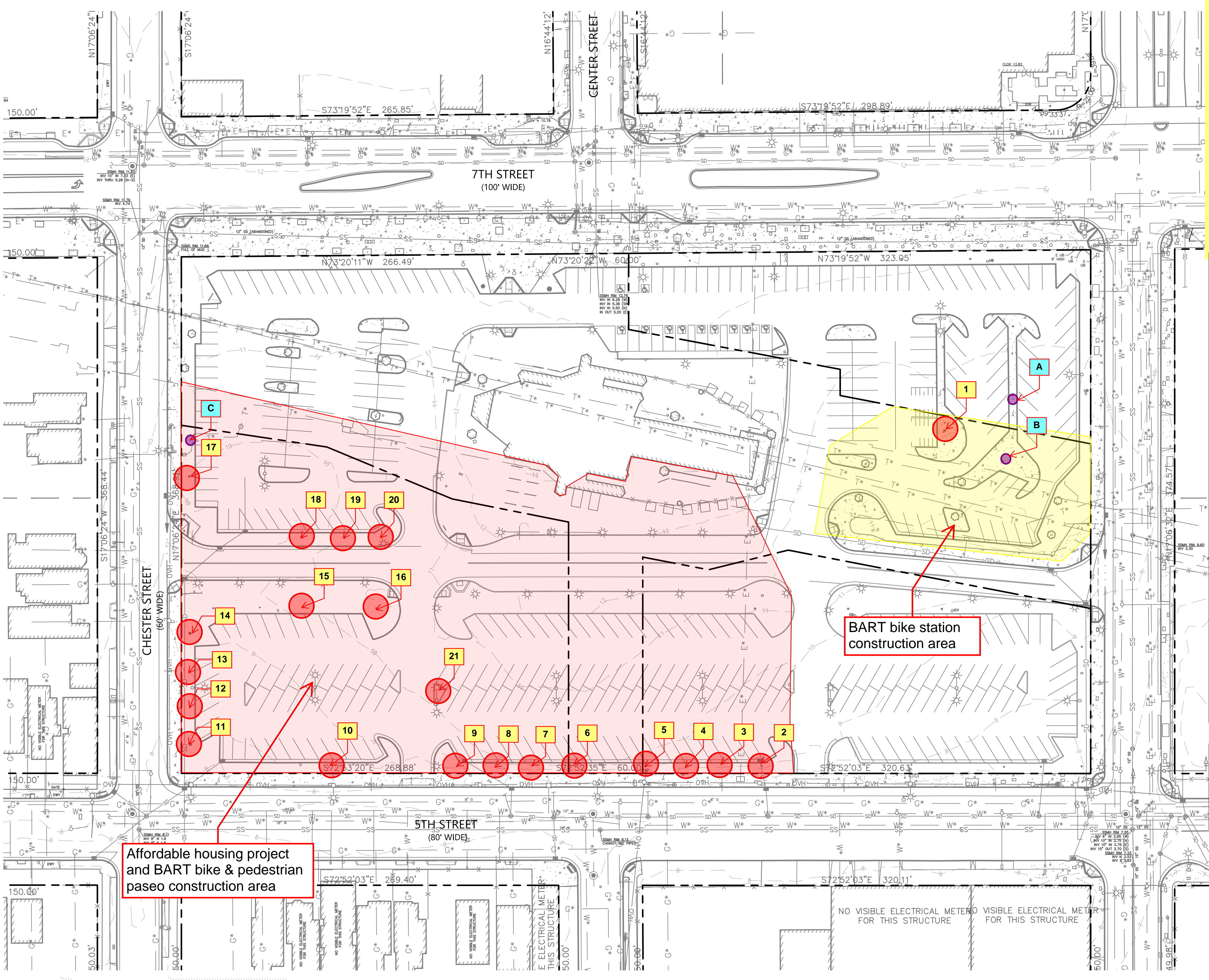
5/11/26

Trees required for the construction of the 240-unit affordable housing project and BART bike station all on BART property

Key	Species - Protected	DHA (in)	Property	Action
1	Maytenus boaria	17	BART	Remove
2	Liriodendron tulipifera	13	BART	Remove
3	Liriodendron tulipifera	9	BART	Remove
4	Liriodendron tulipifera	11	BART	Remove
5	Liriodendron tulipifera	12	BART	Remove
6	Liriodendron tulipifera	10	BART	Remove
7	Liriodendron tulipifera	10	BART	Remove
8	Liriodendron tulipifera	9	BART	Remove
9	Liriodendron tulipifera	9	BART	Remove
10	Liriodendron tulipifera	8,7,6	BART	Remove
11	Platanus X acerifolia	21	BART	Remove
12	Platanus X acerifolia	11	BART	Remove
13	Platanus X acerifolia	12	BART	Remove
14	Platanus X acerifolia	21	BART	Remove
15	Liriodendron tulipifera	10	BART	Remove
16	Liriodendron tulipifera	11	BART	Remove
17	Liriodendron tulipifera	14	BART	Remove
18	Liriodendron tulipifera	13	BART	Remove
19	Liriodendron tulipifera	10	BART	Remove
20	Liriodendron tulipifera	13	BART	Remove
21	Maytenus boaria	8,5,4	BART	Remove

Key	Species - Unprotected	DHA (in)	Property	Action
A	Maytenus boaria	5 (small)	BART	Remove
B	Maytenus boaria	4 (small)	BART	Remove
C	Liriodendron tulipifera	7 (small)	BART	Remove

- TC = TOP OF CURB
- TR = TREE
- TSB = TRAFFIC SIGNAL BOX
- TW = TOP OF WALL
- UB = UTILITY BOX
- UV = UTILITY VAULT
- WM = WATER METER
- WP = WATER PIPE



Affordable housing project and BART bike & pedestrian paseo construction area

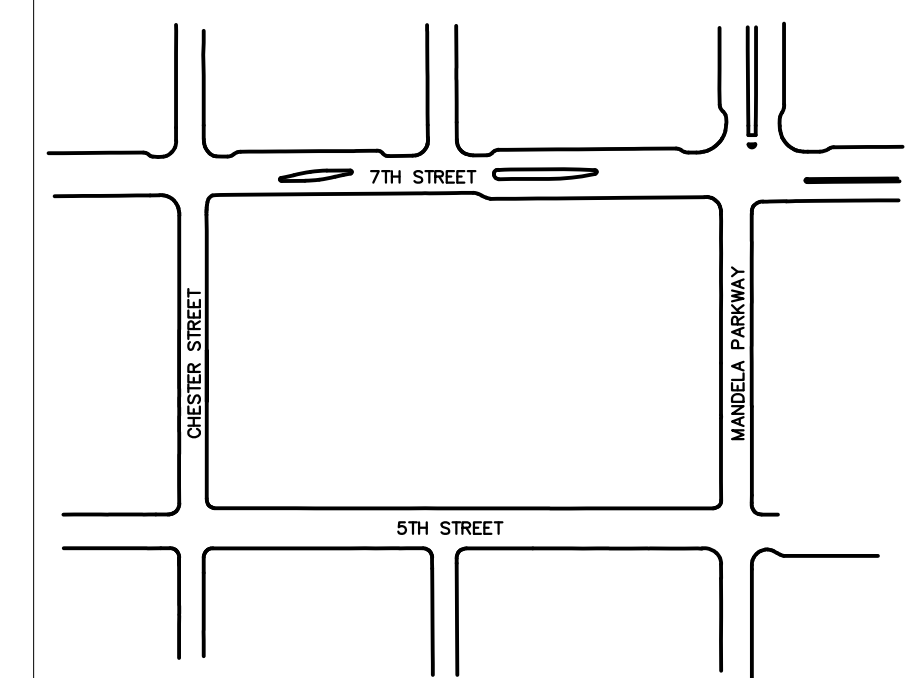
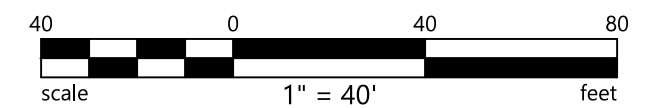
BART bike station construction area

NOTES

- EXISTING UTILITIES DENOTED WITH AN ASTERISK IN THE LINETYPE ARE PROVIDED TO BKF ENGINEERS BY UTILITY COMPANIES AND ARE APPROXIMATE ONLY. ACTUAL LOCATION AND SIZE, TOGETHER WITH THE PRESENCE OF ANY ADDITIONAL UTILITY LINES NOT SHOWN ON THIS PLAN SHALL BE VERIFIED BY THE CONTRACTOR IN THE FIELD PRIOR TO CONSTRUCTION.



Know what's below. Call before you dig.

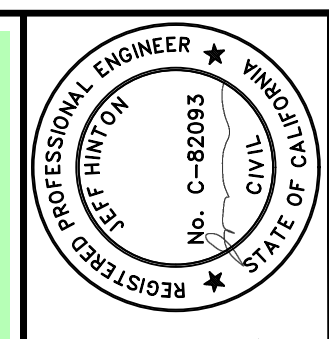


KEY PLAN
NTS

WEST OAKLAND BART STATION PUBLIC IMPROVEMENT
PHASE 1 CONSTRUCTION DOCUMENTS
CITY OF OAKLAND ALAMEDA COUNTY CALIFORNIA

No.	Revisions
Date: 10/16/2025	
Scale: AS SHOWN	
Design: J.M.	
Drawn: K.T.	
Approved: J.H.	
Job No: C80384	

Drawing Number:



Mandela Station at West Oakland BART

Tree Preserve Plan

5/11/26

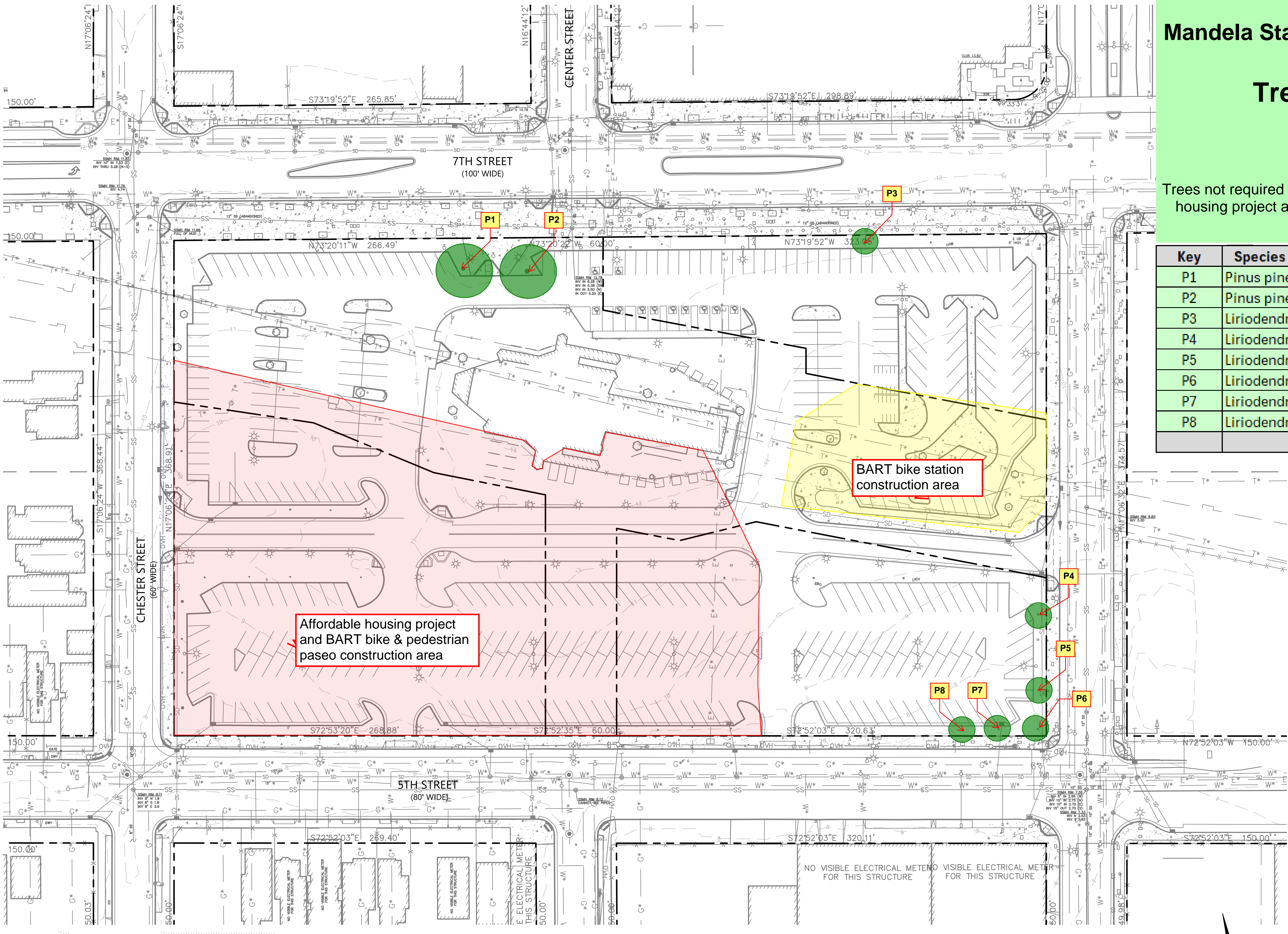
Trees not required for the construction of the 240-unit affordable housing project and BART bike station all on BART property

Key	Species - Unprotected	DHA (in)	Property	Action
P1	Pinus pinea	40	BART	Keep
P2	Pinus pinea	47	BART	Keep
P3	Liriodendron tulipifera	13	BART	Keep
P4	Liriodendron tulipifera	13	BART	Keep
P5	Liriodendron tulipifera	10	BART	Keep
P6	Liriodendron tulipifera	13	BART	Keep
P7	Liriodendron tulipifera	14	BART	Keep
P8	Liriodendron tulipifera	13	BART	Keep

BKF ENGINEERS
1646 N. CALIFORNIA BLVD.
SUITE 400
WALNUT CREEK, CA 94596
(925) 940-2200
www.bkf.com



WEST OAKLAND BART STATION PUBLIC IMPROVEMENT
PHASE 1 CONSTRUCTION DOCUMENTS
CITY OF OAKLAND ALAMEDA COUNTY CALIFORNIA



Affordable housing project and BART bike & pedestrian paseo construction area

BART bike station construction area

ABBREVIATIONS

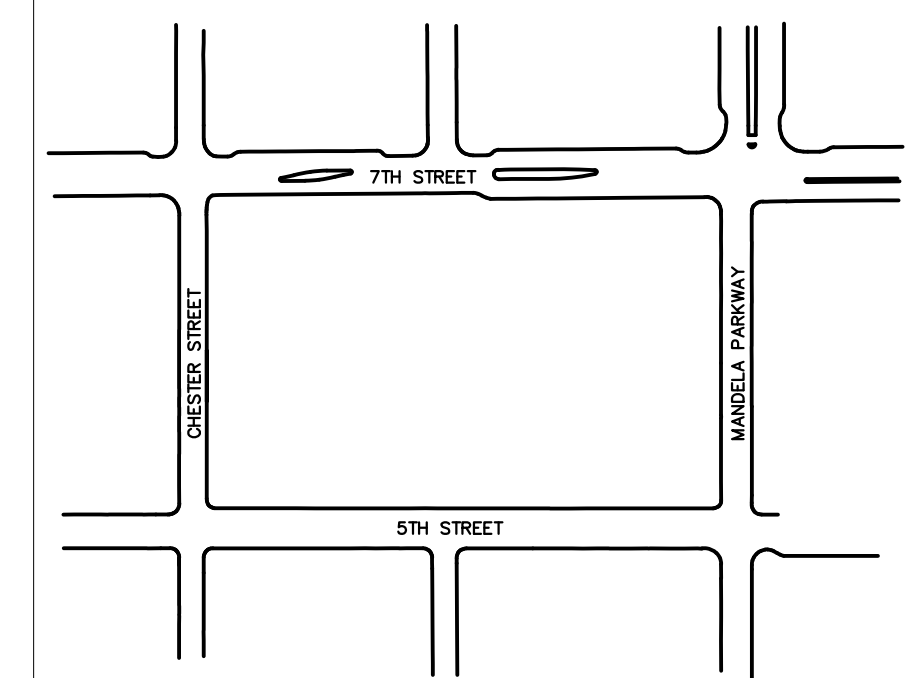
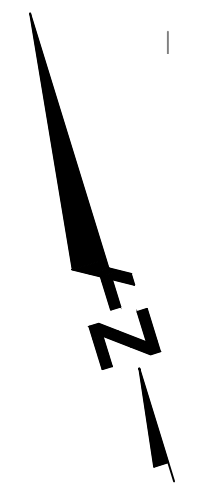
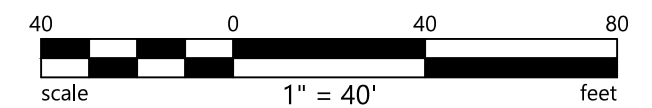
- AD = AREA DRAIN
- B = BOILARD
- BFP = BACKFLOW PREVENTOR
- BR = BIKE RACK
- BW = BACK OF WALK
- CLDR = CENTERLINE OF DOOR
- CMH = COMMUNICATION MANHOLE
- COL = COLUMN
- COMM = COMMUNICATION
- CONC = CONCRETE
- CTV = CABLE TELEVISION
- DW = DRIVEWAY
- EB = ELECTRICAL BOX
- EMH = ELECTRICAL MANHOLE
- EP = EDGE OF PAVEMENT
- EV = ELECTRICAL VAULT
- FDC = FIRE DEPARTMENT CONNECTION
- FL = FLOWLINE
- HCR = HANDICAP RAMP
- IRR = IRRIGATION
- LG = LIP OF GUTTER
- MB = MAIL BOX
- MH = MANHOLE
- P = POST
- PKM = PARKING METER
- SDCO = STORM DRAIN CLEANOUT
- SDDI = STORM DRAIN DROP INLET
- SDMH = STORM DRAIN MANHOLE
- SLB = STREET LIGHTING BOX
- SSCO = SANITARY SEWER CLEANOUT
- SSMH = SANITARY SEWER MANHOLE
- TB = TELEPHONE BOX
- TC = TOP OF CURB
- TR = TREE
- TSB = TRAFFIC SIGNAL BOX
- TW = TOP OF WALL
- UB = UTILITY BOX
- UV = UTILITY VAULT
- WM = WATER METER
- WP = WATER PIPE

NOTES

- EXISTING UTILITIES DENOTED WITH AN ASTERISK IN THE LINETYPE ARE PROVIDED TO BKF ENGINEERS BY UTILITY COMPANIES AND ARE APPROXIMATE ONLY. ACTUAL LOCATION AND SIZE, TOGETHER WITH THE PRESENCE OF ANY ADDITIONAL UTILITY LINES NOT SHOWN ON THIS PLAN SHALL BE VERIFIED BY THE CONTRACTOR IN THE FIELD PRIOR TO CONSTRUCTION.



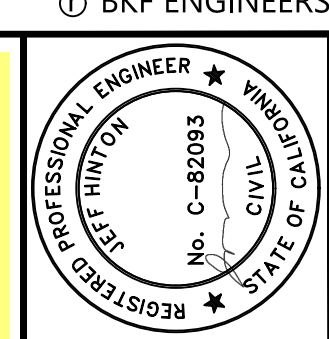
Know what's below.
Call before you dig.



KEY PLAN
NTS

No.	Revisions
Date: 10/16/2025	
Scale: AS SHOWN	
Design: J.M.	
Drawn: K.T.	
Approved: J.H.	
Job No: C160384	

Drawing Number:

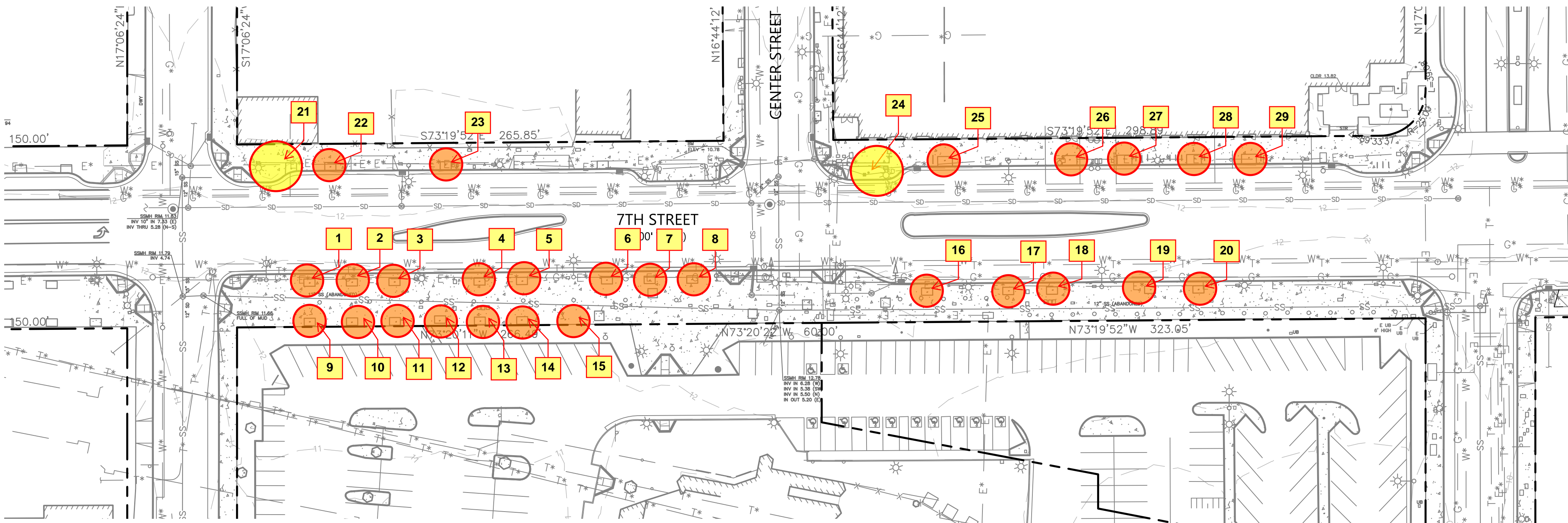


Mandela Station at West Oakland BART

Tree Removal Plan

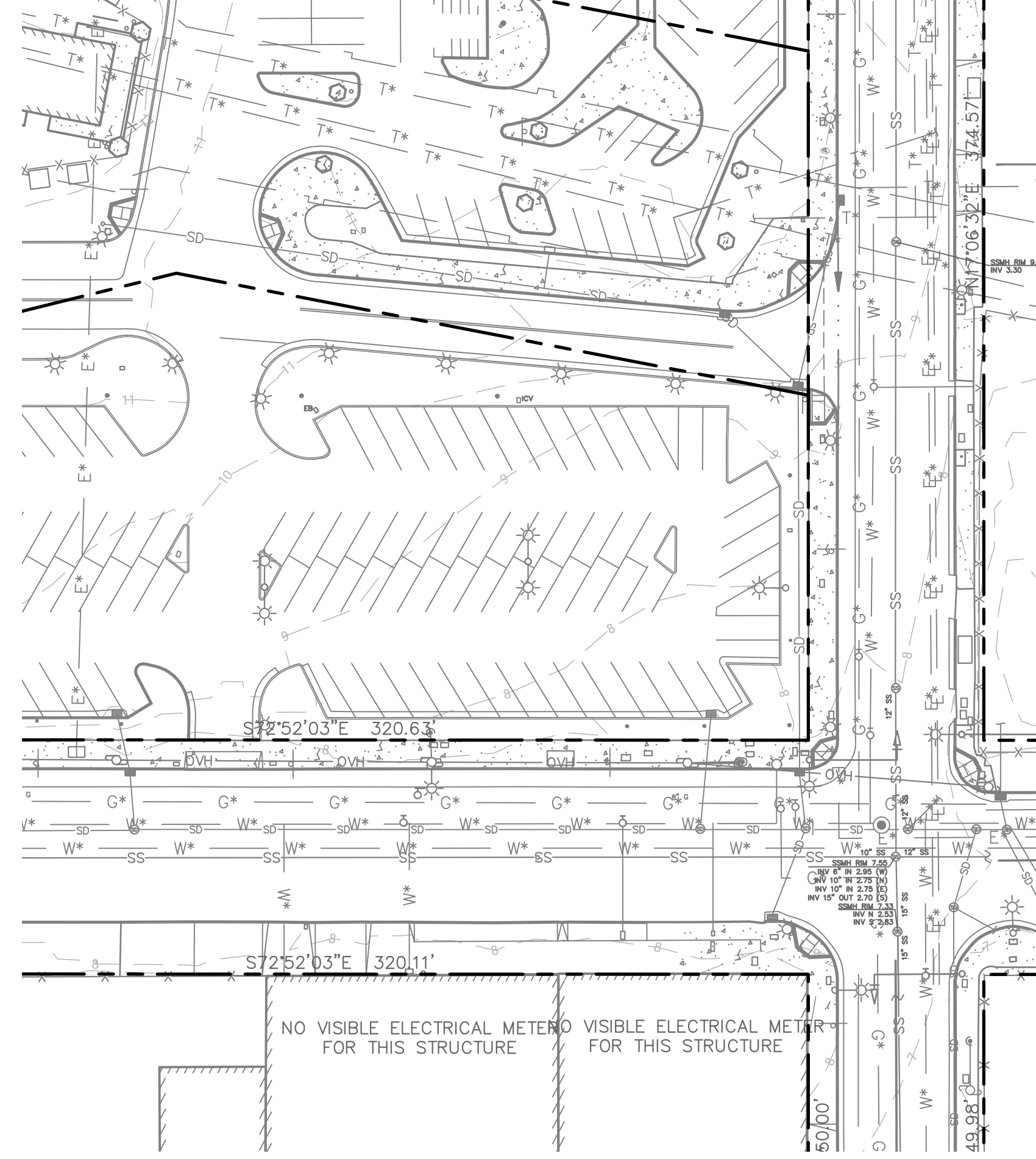
6/10/26

Trees required for the construction of the 7th Street streetscape improvements all within City right-of-way

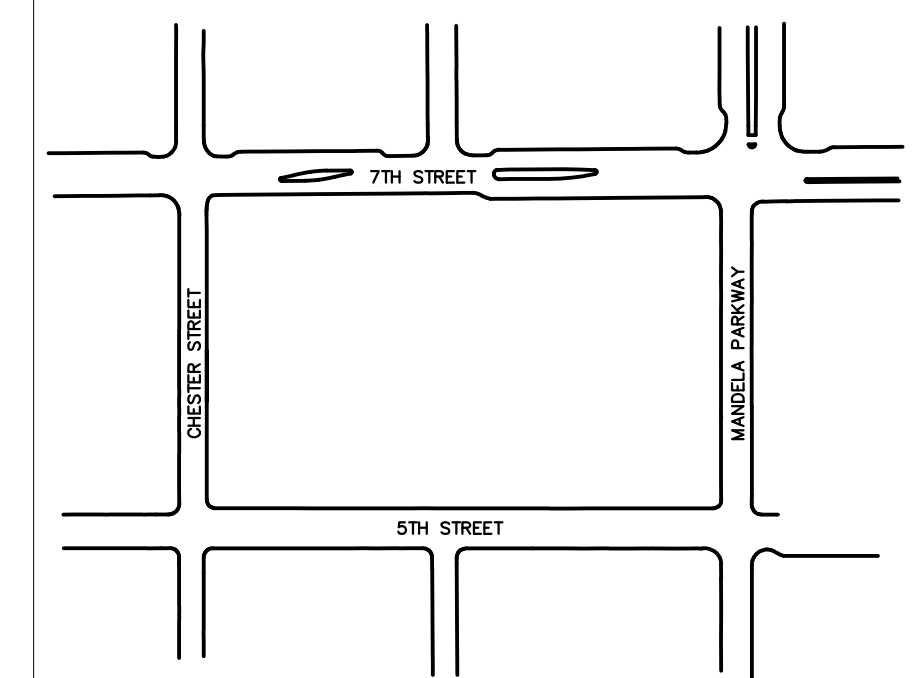
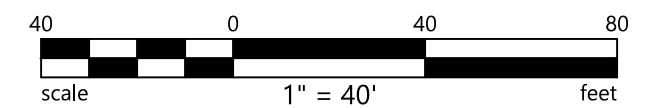


Site Plan Key #	Arborist Report Tag #	Species	Trunk Diameter (in)	Protected Tree	Condition (1=poor 5 = great)	Suitability for Preservation	Suitability for Relocation
1	1	Pistacia chinensis	5 (small)	No	4	Moderate	No
2	2	Pistacia chinensis	6 (small)	No	4	Moderate	No
3	3	Pistacia chinensis	5 (small)	No	4	Moderate	No
4	4	Pistacia chinensis	4 (small)	No	4	Moderate	No
5	5	Pistacia chinensis	5 (small)	No	4	Moderate	No
6	6	Pistacia chinensis	5 (small)	No	4	Moderate	No
7	7	Pistacia chinensis	6 (small)	No	4	Moderate	No
8	8	Pistacia chinensis	6 (small)	No	4	Moderate	No
9	9	Pistacia chinensis	7 (small)	No	4	Moderate	No
10	10	Pistacia chinensis	6 (small)	No	4	Moderate	No
11	11	Pistacia chinensis	6 (small)	No	4	Moderate	No
12	12	Pistacia chinensis	6 (small)	No	4	Moderate	No
13	13	Pistacia chinensis	5 (small)	No	4	Moderate	No
14	14	Pistacia chinensis	5 (small)	No	4	Moderate	No
15	15	Pistacia chinensis	6 (small)	No	4	Moderate	No
16	21	Pistacia chinensis	7 (small)	No	4	Moderate	No
17	22	Pistacia chinensis	7 (small)	No	4	Moderate	No
18	23	Pistacia chinensis	6 (small)	No	4	Moderate	No
19	24	Pistacia chinensis	7 (small)	No	4	Moderate	No
20	25	Pistacia chinensis	7 (small)	No	4	Moderate	No
21	64	American Elm	13	Yes	3	Moderate	No
22	65	Red Horsechestnut	4 (small)	No	4	Moderate	No
23	66	Red Horsechestnut	5 (small)	No	4	Moderate	No
24	67	Marina Madrone	14	Yes	4	High	No
25	68	Red Horsechestnut	5 (small)	No	3	Low	No
26	69	Acer Rubrum	6 (small)	No	2	Low	No
27	70	Acer Rubrum	5 (small)	No	3	Low	No
28	71	Acer Rubrum	7 (small)	No	3	Moderate	No
29	72	Acer Rubrum	5 (small)	No	3	Moderate	No

Key	Species	DHA (in)	Property	Action
1	Pistacia chinensis	5 (small)	City	Remove
2	Pistacia chinensis	6 (small)	City	Remove
3	Pistacia chinensis	5 (small)	City	Remove
4	Pistacia chinensis	4 (small)	City	Remove
5	Pistacia chinensis	5 (small)	City	Remove
6	Pistacia chinensis	5 (small)	City	Remove
7	Pistacia chinensis	6 (small)	City	Remove
8	Pistacia chinensis	6 (small)	City	Remove
9	Pistacia chinensis	7 (small)	City	Remove
10	Pistacia chinensis	6 (small)	City	Remove
11	Pistacia chinensis	6 (small)	City	Remove
12	Pistacia chinensis	6 (small)	City	Remove
13	Pistacia chinensis	5 (small)	City	Remove
14	Pistacia chinensis	5 (small)	City	Remove
15	Pistacia chinensis	6 (small)	City	Remove
16	Pistacia chinensis	7 (small)	City	Remove
17	Pistacia chinensis	7 (small)	City	Remove
18	Pistacia chinensis	6 (small)	City	Remove
19	Pistacia chinensis	7 (small)	City	Remove
20	Pistacia chinensis	7 (small)	City	Remove
21	Ulnus Americana	13	City	Remove
22	Aesculus Californica	4 (small)	City	Remove
23	Aesculus Californica	5 (small)	City	Remove
24	Arbutus X Marina	14	City	Remove
25	Acer Rubrum	5 (small)	City	Remove
26	Acer Rubrum	6 (small)	City	Remove
27	Acer Rubrum	5 (small)	City	Remove
28	Acer Rubrum	7 (small)	City	Remove
29	Acer Rubrum	5 (small)	City	Remove



Know what's below. Call before you dig.



KEY PLAN
NTS

Assessment prepared by Hort Science arborist report dated May 2026

WEST OAKLAND BART STATION PUBLIC IMPROVEMENT
PHASE 1 CONSTRUCTION DOCUMENTS
CITY OF OAKLAND ALAMEDA COUNTY CALIFORNIA

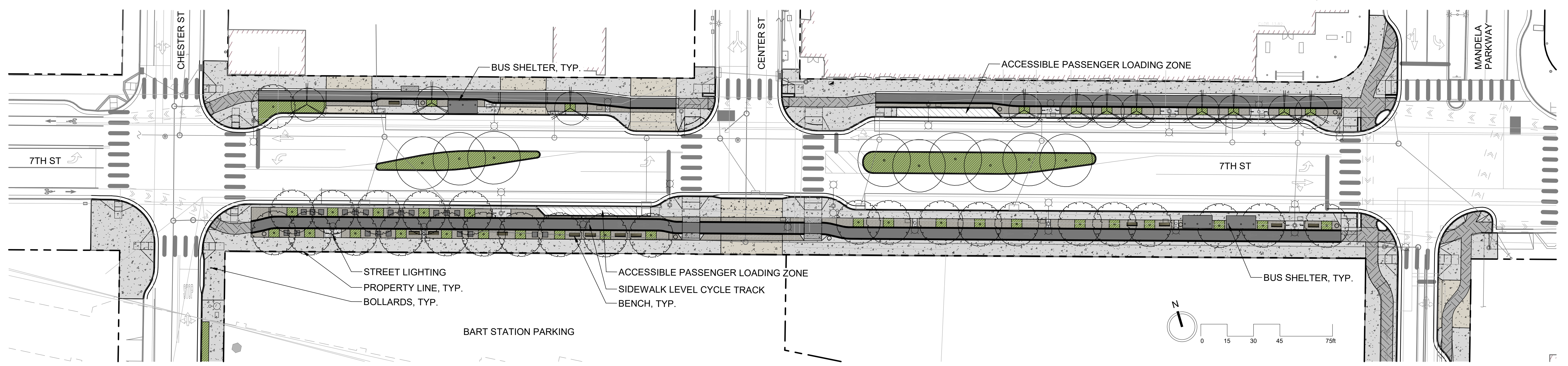
No.	Revisions

Date: 10/16/2025
Scale: AS SHOWN
Design: J.M.
Drawn: K.T.
Approved: J.H.
Job No: C180384

PHI Oct 30, 2025 at 10:58am \\BKF\WUsers\2018180384\West_Oakland_BART_TOD_Survey\EG\Work\Construction Logistics\PDF\01_WOBBART_OLEX_P1.dwg

LANDSCAPE MATERIALS LEGEND

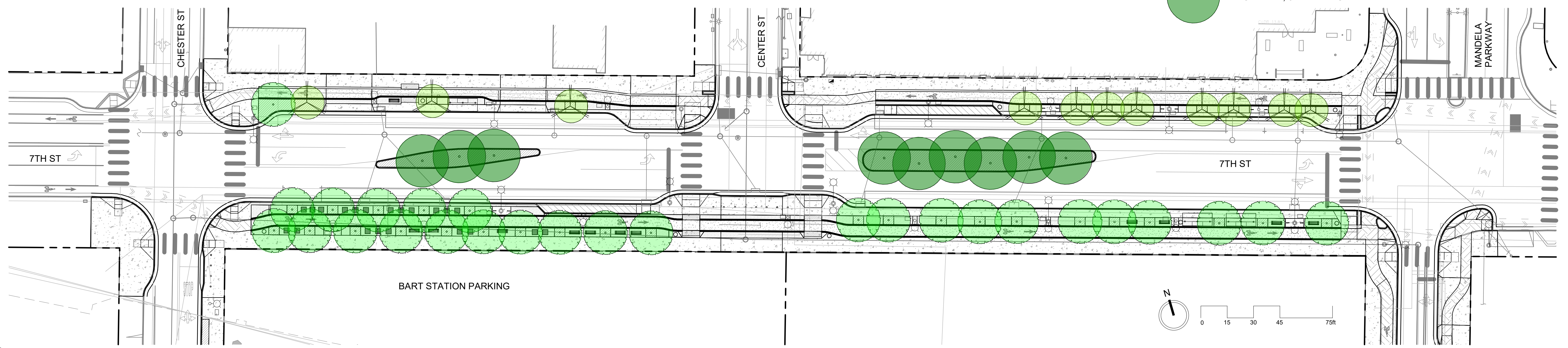
- ASPHALT PAVING
- UNIT PAVERS
- PLANTING AREA
- CONCRETE PAVING, STANDARD
- CONCRETE PAVING, DARK GRAY
- CONCRETE PAVING, DRIVEWAY
- "WALK OF FAME" PLAQUES



1 MATERIALS PLAN
L1.0
1" = 30'-0"

PLANTING LEGEND

- SMALL TREE, 4' PLANTING WIDTH
- MEDIUM TREE, 5' PLANTING WIDTH
- LARGE TREE, 6' PLANTING WIDTH



2 PLANTING PLAN
L1.0
1" = 30'-0"

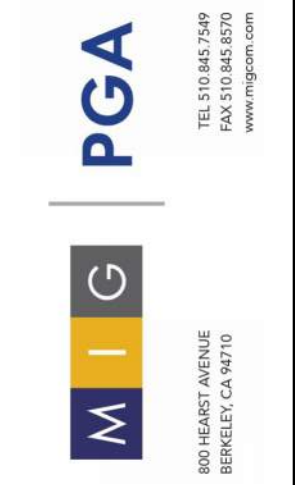
WEST OAKLAND BART STATION PUBLIC IMPROVEMENT
100% CONSTRUCTION DOCUMENTS
CITY OF OAKLAND
ALAMEDA COUNTY
CALIFORNIA

LANDSCAPE PLAN

Date	No.	Revisions
5/4/2026		

Scale: 1" = 30'-0"
 Designer: MW
 Drawn: MW
 Approver: MW
 Job No.: C-180384

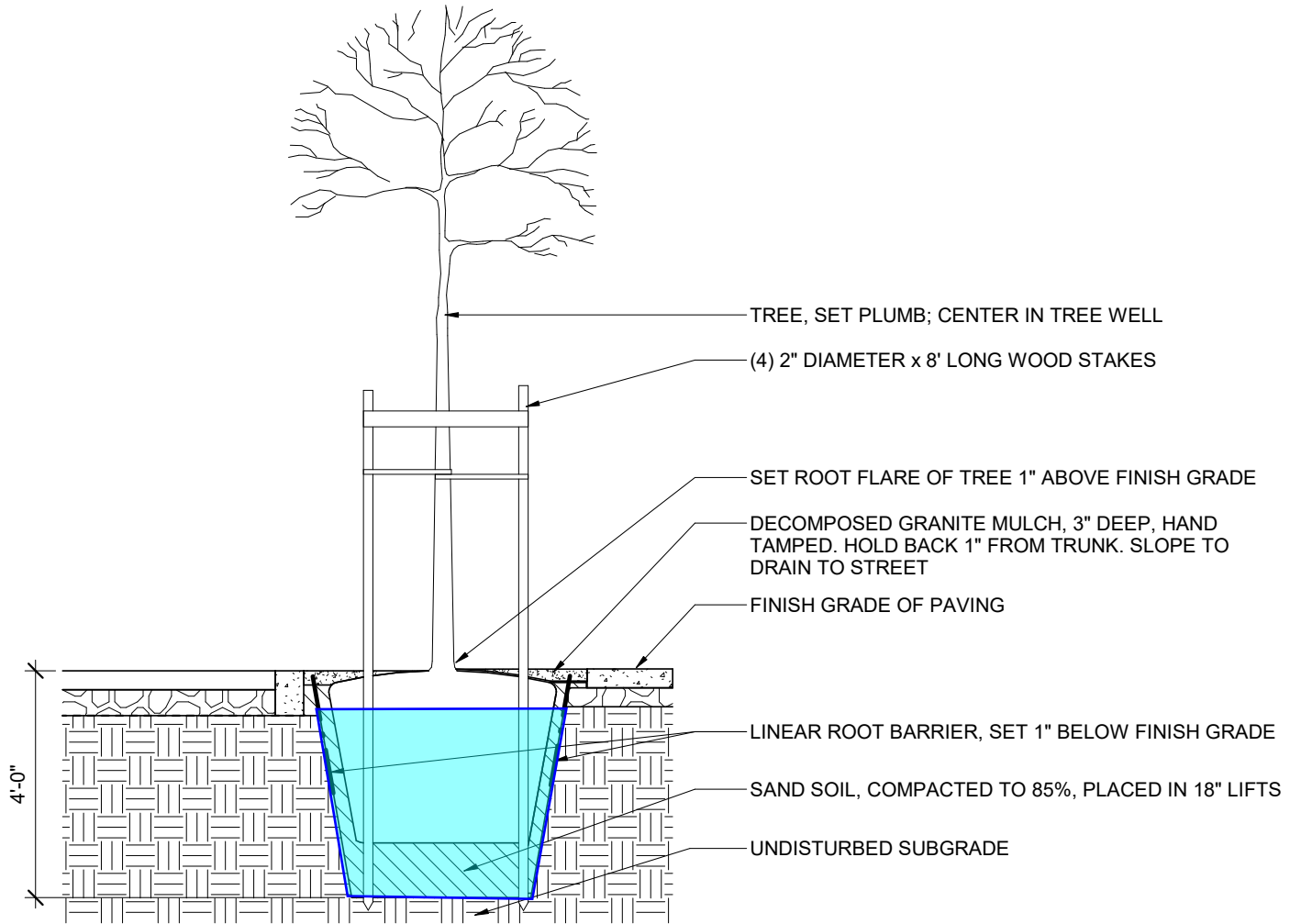
SHEET NO.
L1.0
OF



BKF ENGINEERS
1646 N. CALIFORNIA BLVD.
SUITE 400
WALNUT CREEK, CA 94596
(925) 940-2200
www.bkf.com



Soil Improvement for New Planted Trees

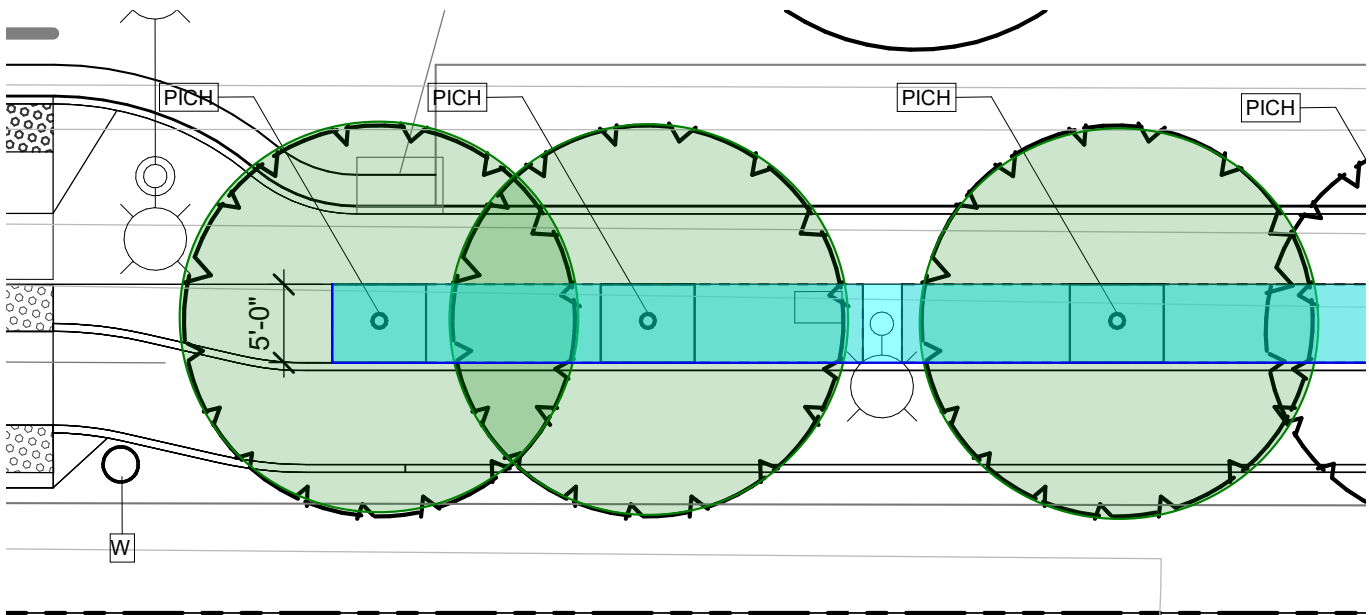


NOTES:

1. SAND SOIL: CUSTOM PLANTING SOIL MIX COMPOSED OF: 91% COARSE CALCIUM-FREE SAND (0.21MM MEDIAN SIZE), 4% CLAY, 5% COMPOST. SOIL MIX IS TO BE WELL MIXED, PLACED IN 18" LIFTS, AND COMPACTED TO 85% PROCTOR.
2. WHEN A TREE IS PROPOSED WITHIN 5' OF NEW OR EXISTING PAVING, INSTALL 8' LENGTH OF LINEAR ROOT BARRIER AT EDGE OF PAVING CENTERED ON TREE. TREE WELLS WILL HAVE ROOT BARRIER AROUND ENTIRE PERIMETER.

2 TREE PLANTING AT SAND SOIL

L5.4 1/2" = 1'-0"



TREE SPECIES SELECTION

GOALS: ESTABLISH ROBUST TREE CANOPY FOR SHADE, AIR QUALITY, AND ACCESS TO NATURE.

-SHADE STREETS, SIDEWALKS, AND TRANSIT STOPS

- + REDUCE HEALTH IMPACTS OF EXTREME HEAT
- + MAXIMIZE SHADE AT SIDEWALKS AND BUS STOPS TO PROTECT VULNERABLE POPULATIONS
- + USE LARGE TREES WITH WIDE, SPREADING FORMS

-MAXIMIZE AIR QUALITY BENEFITS

- + REDUCE HEALTH IMPACTS OF LOCALIZED AIR POLLUTION
- + USE LARGE TREES FOR GREATER LEAF SURFACE AREA
- + USE EVERGREEN TREES FOR YEAR ROUND BENEFITS

-CONNECT PEOPLE WITH NATURE

- + USE CALIFORNIA NATIVE TREES AND REGIONAL NATIVE TREES WHEN POSSIBLE
- + USE LARGE TREES TO MAXIMIZE ECOLOGICAL BENEFITS
- + ATTRACT BIRDS AND INSECTS



SMALL TREE SPECIES SELECTION

SELECTION CRITERIA: CITY OF OAKLAND APPROVED STREET TREE, 4' PLANTING WIDTH.



Acer buergerianum
trident maple



Arbutus 'Marina'
strawberry tree



Cassia leptophylla
gold medallion tree



Handroanthus heptaphyllus
pink trumpet tree



Lagerstroemia 'Natchez'
Natchez crape myrtle



Quercus gravesii
Chisos red oak



Tristaniopsis laurina
water gum



MEDIUM TREE SPECIES SELECTION

SELECTION CRITERIA: CITY OF OAKLAND APPROVED STREET TREE, 5' PLANTING WIDTH.



Lophostemon confertus
Brisbane box



Pistacia chinensis
Chinese pistache



Quercus engelmannii
Engelmann oak



Quercus hypoleucoides
silverleaf oak



Quercus rugosa
netleaf oak



Quercus tomentella
island oak



LARGE TREE SPECIES SELECTION

SELECTION CRITERIA: CITY OF OAKLAND APPROVED STREET TREE, 6' PLANTING WIDTH.



Angophora costata
Sydney red gum



Corymbia citriodora
lemon-scented gum



Corymbia aparrerinja
ghost gum



Cedrus atlantica
atlas cedar



Platanus racemosa 'Roberts'
Roberts California sycamore



West Oakland BART - 7th Street Streetscape Alternative Tree Species

		More Drought Resistant	Evergreen or Mostly Evergreen ²	California Native ⁴	Regional Native ^{3,4}
Small Tree Options: 4' planting width, need 11 on north side sidewalk					
	Acer buergerianum		X		
	Arbutus X marina		X		
1	Cassia leptophylla	X	X		
	Handroanthus heptaphyllus	X	X		
	Lagerstroemia 'Natchez'	X			
	Tristanopsis laurina		X		
	Quercus gravesii	X	X		X
Medium Tree Options: 5' planting width, need 27 on south side sidewalk					
	Lophostemon confertus		X		
1	Pistacia chinensis	X			
	Quercus engelmannii	X	X		
	Quercus hypoleucoides	X	X		X
	Quercus rugosa	X	X		X
	Quercus tomentella	X	X	X	
Large Tree Options: 6'-8' planting width, need 9 in street median					
	Angophora costata	X	X		
	Cedrus atlantica	X	X		
1	Corymbia aparrerinja	X	X		
	Corymbia citriodora	X	X		
	Platanus racemosa 'Roberts'			X	

Notes:

- 1 Current specified tree by project's landscape architect
- 2 Evergreens will have more air quality benefits
- 3 American southwest or northern Mexico
- 4 Native trees support native birds and insects, which benefit people by reconnecting them with nature. With the combined effects of global climate change and urbanization, many native trees are not well adapted to life as a street tree in Oakland today and into the future. Establishing thriving street trees (to provide shade, improve air quality, support wildlife, and improve human quality of life) requires looking beyond California native trees to trees from hotter, drier parts of the world. Trees from neighboring ecoregions (the American southwest and northern Mexico) can also assist in the migration of birds and insects fleeing climate change.